

# STRATHMORE ESTATE STRATHFIELD

24 SPLENDID  
BUILDING SITES.

FOR AUCTION SALE ON THE GROUND AT 3 P.M.  
**SATURDAY 14<sup>TH</sup> NOVEMBER 1936**

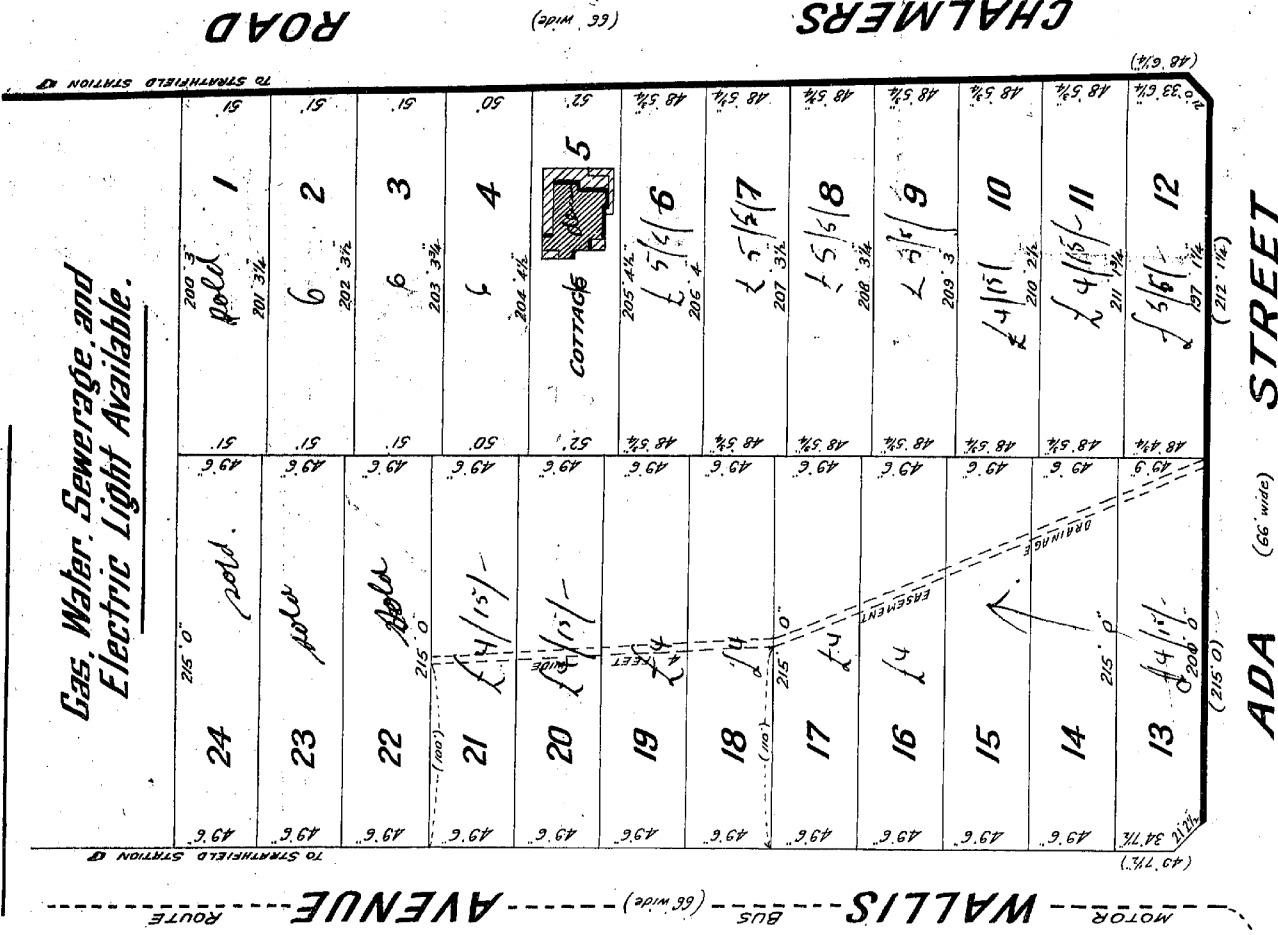
**RICHARDSON &  
WRENCH LTD**

AUCTIONEERS, 92 PITT ST. SYDNEY.

**TORRENS  
TITLE.**

**TERMS.**  
10 Per Cent Deposit.  
balance by 12 equal  
quarterly payments with  
interest at 5 per cent.  
Right to pay off.

Gas, Water, Sewerage, and  
Electric Light Available.

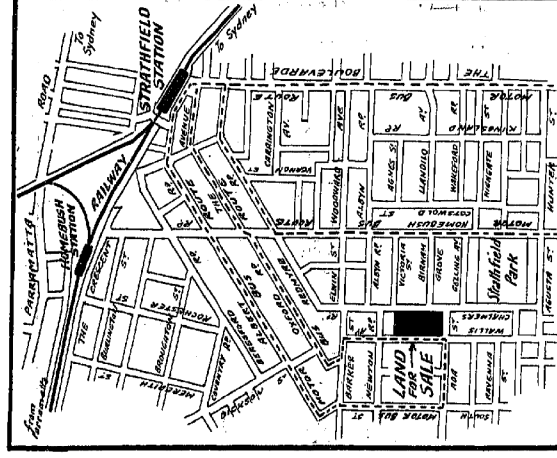


MOTOR ROUTE WALLIS AVENUE (66 wide) BUS ROUTE (66 wide)

ROAD CHALMERS (66 wide)

VICTORIA ST.

TO HOMEBUSH ROAD & MOTOR BUS ST.



LOCAL SKETCH.

BIRNAM GROVE

TO HOMEBUSH ROAD & MOTOR BUS ST.

**W. LIEBERMAN.**  
Solicitor to the Estate,  
56 Hunter St., Sydney.

**W.A. O'DONNELL.**  
Registered Surveyor,  
76 Pitt St., Sydney.

NOTE: All Dimensions & Easements etc, are subject to Deposited Plan