

MUNICIPALITY OF ENFIELD, N.S.W.



INCORPORATED 1889

SOUVENIR  
OF THE  
OPENING  
OF CORONATION PARADE

BY

HIS EXCELLENCY THE GOVERNOR,  
LORD WAKEHURST, K.C.M.G.,

ON

5th JUNE, 1937



With which is incorporated the  
Annual Report for the Year 1936

# MUNICIPALITY OF ENFIELD

INCORPORATED 1889

**Area : 1,678 acres.**

**Population : 15,000**

## **Aldermen, 1936/37**

Alderman R. H. JENNER, J.P., Mayor

Alderman T. E. COOKE, J.P.,  
Deputy Mayor, 1936

Alderman W. E. FLOCKHART,  
J.P.

Alderman E. GRANT  
(Died 29/1/36)

Alderman A. HEAD, J.P.,  
(Resigned 4/2/36)

Alderman D. H. JACKSON, J.P.

Alderman J. H. JONES, J.P.

Alderman S. A. LLOYD, J.P.,  
M.L.A.

Alderman J. MOONEY, J.P.

Alderman J. W. PARKES, J.P.,  
Deputy Mayor, 1937

Alderman C. T. QUIGG, J.P.

## **Officials:**

Town Clerk - - - - Harold A. Drew, J.P., F.L.C.A.

Engineer - - - - J. T. S. Ryan, J.P., L.S.

Health & Building Inspector : F. E. S. Moore, J.P., A.M.I.S.E., M.I.H.S.

Assistant Health Inspector & Baths Manager: W. P. Upcroft, J.P.

## **Auditors:**

ALFRED S. WHITE & ILIFFE,  
Chartered Accountants (Aust.)

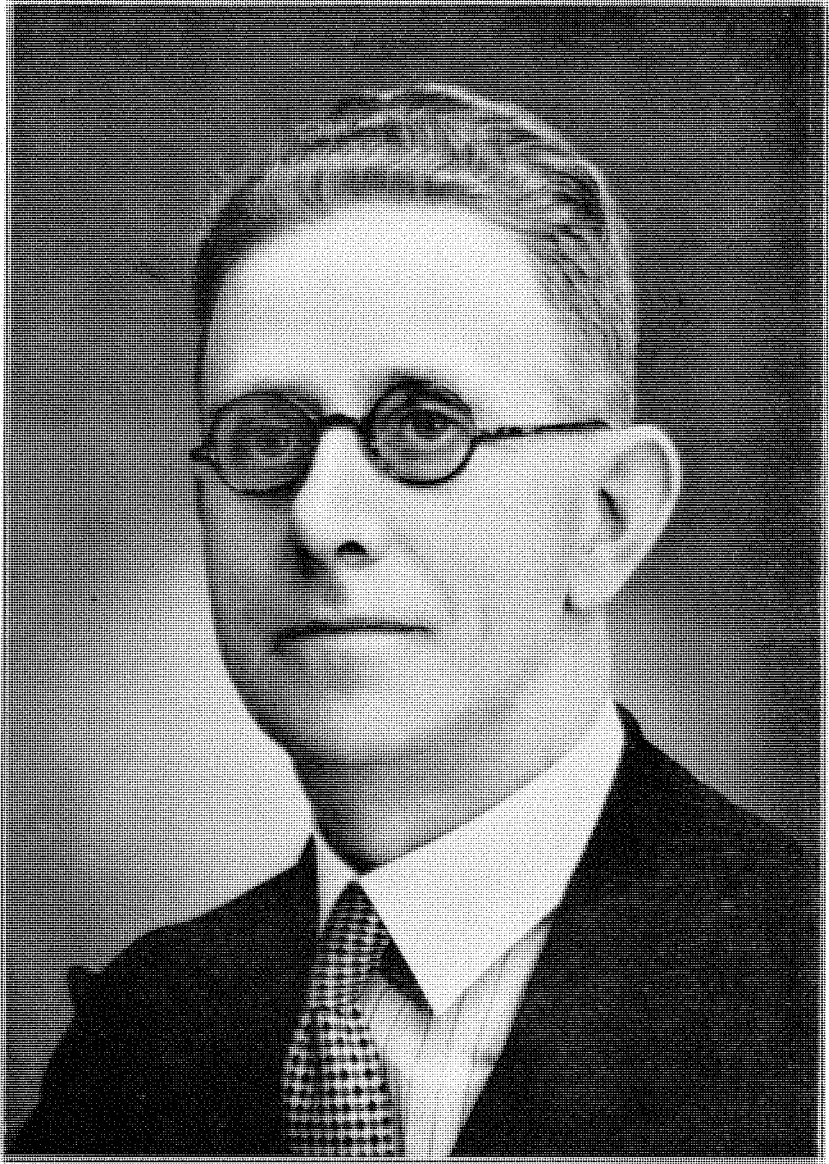
# Municipality of Enfield

---

## Roll of Mayors :

---

1889-90	-	-	-	-	JAMES EVE
1891	-	-	-	-	THOMAS HODSON
1892	-	-	-	-	HERMAN H. GROTH
1893	-	-	-	-	GEORGE WESTBROOK
1894-5	-	-	-	-	HENRY G. LIPSCOMB
1896	-	-	-	-	GEORGE W. EATON
1897-1902	-	-	-	-	THOMAS HODSON
1903	-	-	-	-	HENRY C. PILCHER
1904-7	-	-	-	-	JAMES MACKAY
1908	-	-	-	-	ALBERT E. WEIL
1909	-	-	-	-	JAMES MACKAY
1910-13	-	-	-	-	GEORGE B. PHILLIPS
1914	-	-	-	-	FREDERICK WILLIAMS
1915-17	-	-	-	-	EBENEZER FORD
1917-18	-	-	-	-	FREDERICK WILLIAMS
1919	-	-	-	-	ADRIAN BURGESS
1920-29	-	-	-	-	EBENEZER FORD
1930-35	-	-	-	-	STANLEY A. LLOYD
1936-37	-	-	-	-	RHEUBEN H. JENNER



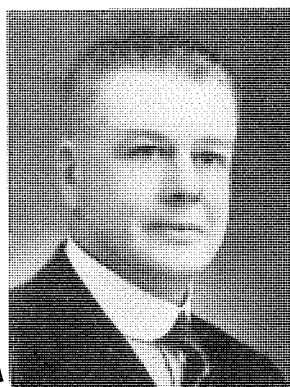
Alderman R. H. JENNER, J.P.  
Mayor of Enfield, 1936-37



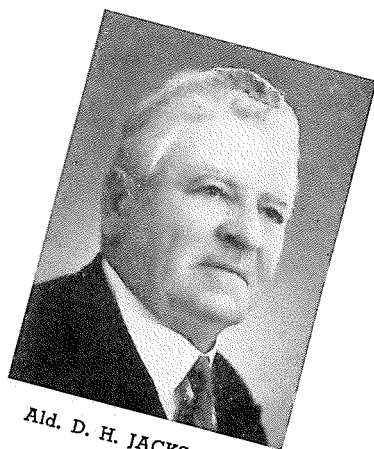
THE MAYORESS OF ENFIELD.  
Mrs. J. T. OLDING



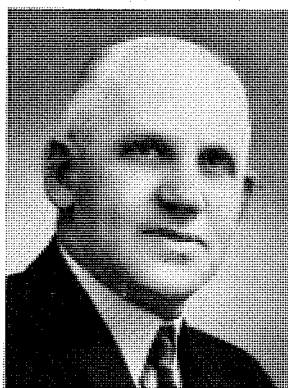
Ald. T. E. COOKE, J.P.



Ald. W. E. FLOCKHART, J.P.



Ald. D. H. JACKSON, J.P.



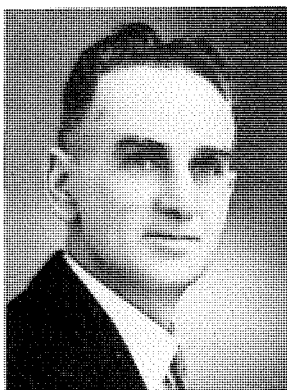
Ald. J. H. JONES, J.P.



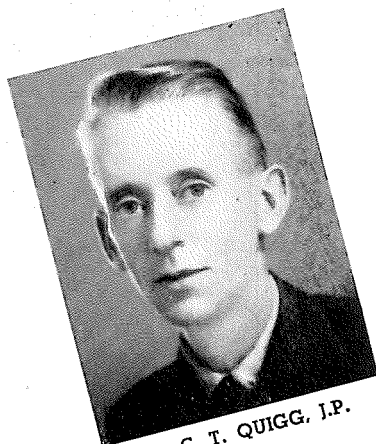
Ald. S. A. LLOYD, J.P., M.L.A.



Ald. J. MOONEY, J.P.



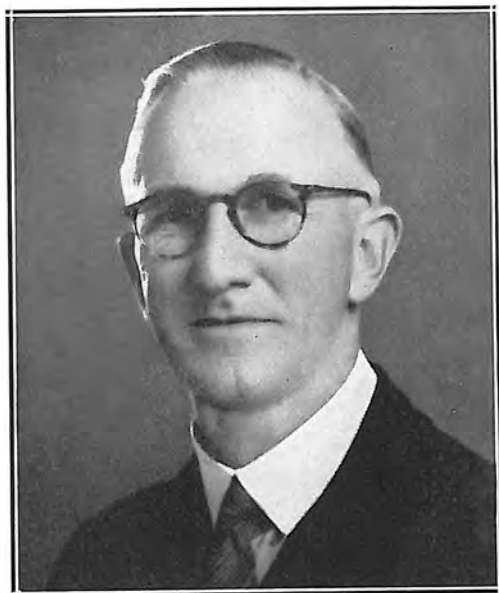
Ald. J. W. PARKES, J.P.



Ald. C. T. QUIGG, J.P.

Members of the Council of the  
MUNICIPALITY OF ENFIELD





HAROLD A. DREW, J.P., F.L.C.A.  
Town Clerk



THE COUNCIL CHAMBERS, ENFIELD



### ARCH ERECTED AT CORONATION PARADE

To commemorate the Coronation of King George VI. and Queen Elizabeth, 12th May, 1937

## CORONATION PARADE

**C**ORONATION Parade comprises two parallel streets—formerly known as Punchbowl Road and The Boulevard—separated by a Reserve over 80 feet wide, and extends from The Hume Highway (Liverpool Road) to Cook's River, a distance of approximately three-quarters of a mile.

For approximately half this distance a double set of tramlines is laid through the Reserve, from the Hume Highway to Tangarra Street.

This Parade constitutes the main entrance to the Municipality from the Illawarra Suburbs, and for many years it has been a problem.

In its natural state it alternately became a dried-up wilderness or a field of waving weeds and paspalum grass, according to the vagaries of the season.

When Council decided to undertake a Programme of Works under the Local Government (Further Amendment) Act, the improvement of this area was considered to be a scheme of major importance.

To-day there is widespread agreement that a municipality is not fully planned unless provision is made for the use and appearance of the various vacant spaces owned by the Council, and that landscaping is not a feature distinct from the construction of roads, drainages and footpaths, but rather the final step.

Generally speaking, the average suburban park is used as a sports ground, or enclosed with fences as a cricket or football oval, and thus all sense of retirement and beauty is lost.

Coronation Parade has, with careful planning, been changed from waste land to a place of beauty, where fresh air, pleasant vistas, change and rest may be enjoyed by the residents.

The benefits which obtain from this improvement are not confined to the aesthetic and recreational.

Tree-planting, grading and sowing of lawns and general landscaping, though unnecessary from a strictly engineering point of view, make the surroundings attractive and thereby have a distinct financial advantage.



On the first section between Plymouth and Hill Streets, the surface was ploughed, scarified, graded and sown with lawn grass and couch.

A central gravel pathway was constructed bordered on each side by beds of annuals and flowering shrubs, which form a distinctive colour scheme.

Along the low embankment fronting the tramline, a rockery was planted with 3,000 special rockery specimens.

A double row of snapdragons was planted along the Boulevard frontage.

At a later date Council considered that an improvement could be effected by the construction of some distinctive architectural feature, which would appropriately commemorate the Coronation of His Majesty King George VI. Plans of a rustic brick colonnade were prepared and approved, and this dignified structure, which combines the utilitarian and traditional, has now been erected.

The next section between Hill and Dean Streets has been laid down in lawns and rose plantations.

On the Boulevard frontage Silky Oaks and Jacaranda trees have been planted alternately.

At the Dean Street tram stop a number of radial concrete paths converge to a proposed rustic brick waiting-room, which is surrounded by beds of annuals. In this vicinity Cypress trees have been planted at suitable intervals.

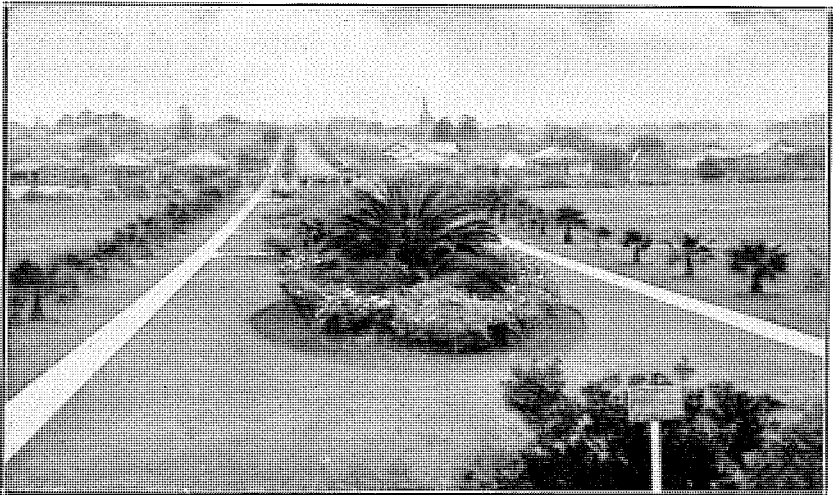
The section between Hill Street and Cook's River has been ploughed, scarified, graded and sown with lawn grass and couch, and massed beds of roses planted throughout.

The Silky Oak and Jacaranda Avenues have been continued to Cook's River, and suitable clumps of shrubs set out.

On the Punchbowl Road frontage an avenue of shade trees at 50 feet intervals is proposed and the area adjacent to the Tramway has been graded and grassed.

Both frontages of the Parade have been kerbed and guttered, and all streets crossing the area have been similarly treated.

The estimated cost of improvements to the area is £2,500, and that of adjacent works, such as kerbing and guttering, road re-construction, etc., £3,500.



**HENLEY PARK. ENFIELD**

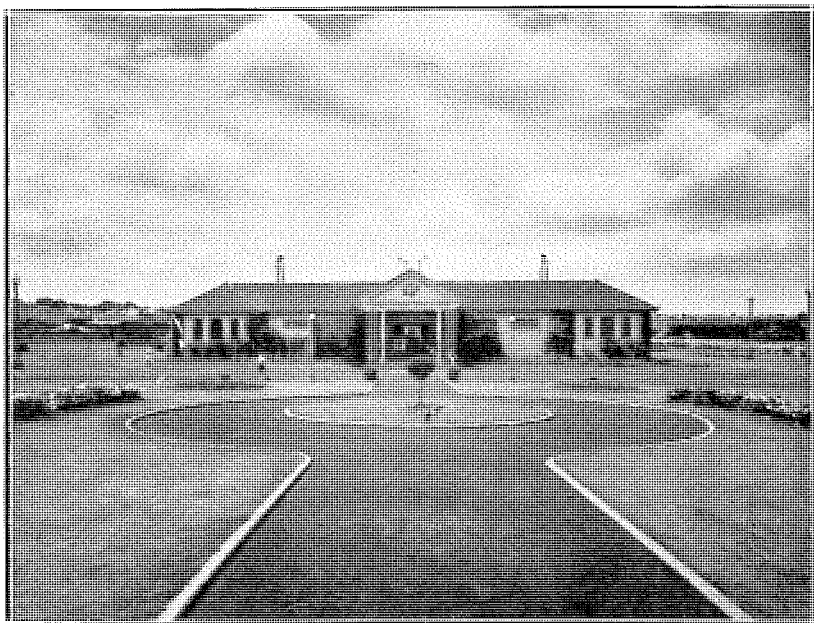
# MUNICIPALITY OF ENFIELD

## Annual Report

for year ended 31st December, 1936.

**B**EFORE briefly traversing the activities of the Council during the year 1936, reference must be made to the heartfelt sorrow felt throughout the Empire at the death of our beloved Sovereign, King George V., which occurred on 21st January, 1936. At the meeting of the Council called for that evening the Council adjourned immediately after passing a resolution expressive of the sympathy of the citizens of Enfield, which was forwarded through the usual official channels to the members of the Royal Family, and duly acknowledged.

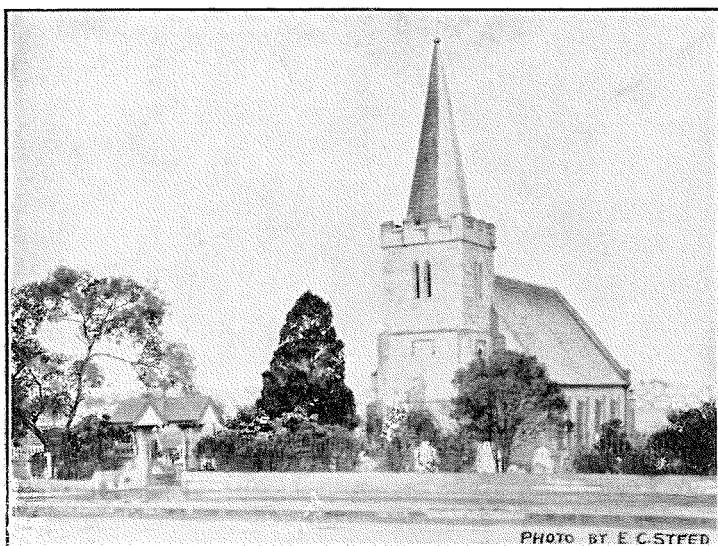
As a result of the economic conditions of the past few years, the Council's available revenue has been restricted, and in consequence the annual programmes of new works have not been as extensive as in more bountiful times. Every effort has been made however to preserve the existing assets in good repair, and to expend to the best advantage whatever surplus became available.



ENFIELD OLYMPIC SWIMMING POOL, HENLEY PARK

The General Rate levied for the year 1936 was again on the basis of 4½d. in the £ on the Unimproved Capital Value of ratable land, and was designed, as in past years, to cover all requirements, including the compulsory levy of 1½d. in the £ made by the Department of Main Roads, and the necessary provision for the payment of Interest and instalments of Principal in respect to the Council's loan commitment. During the last six years there has been a consistent reduction in the amount levied by way of General Rate on lands in the Municipality, the aggregate imposed in 1936 being only 62% of that for 1930. In other words, the average rate payable per assessment has fallen from £4/15/9 in 1930 to £2/18/6 in 1936. Whilst costs are admittedly lower, it will be realised that they have not dropped to this extent, and that only by the strictest economy, coupled with the postponement of all expenditure not immediately necessary, has the Council been able to give such a large measure of relief during a period when it was particularly appreciated by the vast majority of ratepayers. The last year's revenue was not quite sufficient to meet all expenditure, but it is felt that the latter could not have been further curtailed without affecting the intangible value of municipal amenities in the daily lives of the residents, and the real influence of a well-balanced municipal system on returning property values. As things are, the Council feels that Enfield has not only successfully maintained but even improved its position during the lean years without imposing undue burdens upon its people, and is emerging from the economic crisis with every prospect of rapid and unhampered progress in the future.

During 1936 the Council's activities as far as roads and footpaths were concerned were financed from revenue, and were mainly confined to maintenance works. Many of the pavements laid in past years were resurfaced to repair the wear and tear of traffic which was begin-



THE CHURCH OF ST. THOMAS, ENFIELD.

ning to become noticeable. By this policy the assets provided in the past were prevented from deterioration and the consequent heavy expense of future renewal. Of the total expenditure directly on works connected with roads, £6,093, over 50% was spent in the upkeep of the carriageways, and almost £2,000 in the maintenance of footways, street cleansing, and the like. Of the balance spent in the construction of new works, £1,076, nearly half was expended in the provision of new footpath paving, perhaps one of the most widely appreciated forms of improvement. During the year a system of Local Patrols was inaugurated and proved most beneficial in providing a speedy and efficient means of dealing with the smaller maintenance jobs which from time to time require attention.

Early in the year the Council commenced to explore the possibilities of a scheme in pursuance of the provisions of the Local Government (Further Amendment) Act, 1935, which provides for Government assistance to Councils in connection with the construction of works of permanent improvement, with the object of reducing unemployment. After considerable negotiation the Council decided to enter upon a scheme involving a total expenditure of approximately £30,000, of which the Government would provide £11,500 by way of Grant, leaving £18,500 to be raised by way of Loan. In addition to the straight-out Grant, the Minister further agreed to pay the instalments on the Loan for the first two years, and to recommend a subsidy to the Council during the term of the Loan to the extent of all Interest in excess of 3½% per annum. The currency of the Loans was fixed at 15 years, repayable by equal half-yearly instalments covering Interest and Principal. The Council felt that the amount involved was the limit of the liability which it



ENFIELD OLYMPIC SWIMMING POOL

should prudently undertake, but considered that the terms obtained made the scheme a most advantageous method of providing for a number of works which, though considered necessary, had been beyond the Council's current revenue resources. Mr. J. T. S. Ryan, L.S., was appointed as Engineer to prepare details of the programme and supervise the execution of the works, and towards the close of the year the project had so far advanced that the Council was able to adopt a schedule of works consisting of street beautification and park improvement, several major drainage works, and a comprehensive road and footpath construction programme.

For the purpose of compliance with the Local Government Act the Schedule was divided into two parts, one section of a total value of £10,000 being dealt with by way of an Ordinary Loan of £6,000, supplemented by portion of the Government Grant beforementioned. This section comprised the improvement of The Boulevarde, Ford Park, and Grant Park, and the construction of stormwater drains at Dean and Water Streets, Portland Street, Weil Avenue and Trelawney Street, and Grant Park respectively, all in localities which had long been sources of trouble in this regard.

The improvement of the central area of the Boulevarde, perhaps the outstanding feature of the programme, was deemed by the Council to be a worthy means of commemorating the Coronation of His Majesty King George VI., and it has accordingly been decided to take the necessary steps to alter the designations of the twin roads, The Boulevarde and Punchbowl Road, between Hume Highway and Cook's River, to "Coronation Parade," and to erect a Commemorative Arch to mark the event. The matter is dealt with in detail in an earlier section of this booklet.



**HENLEY PARK, ENFIELD**

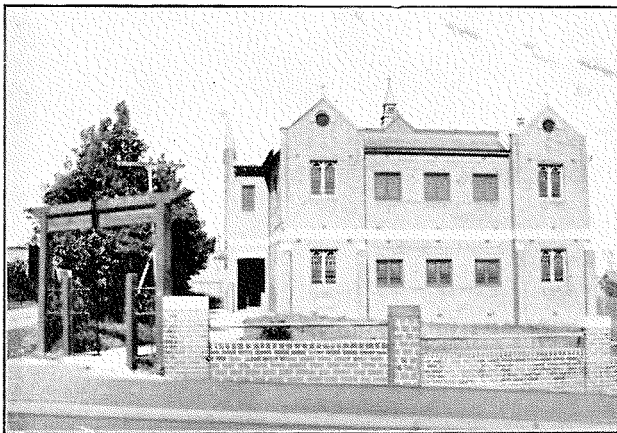
The other section of the works comprising the expenditure of approximately £20,000 was dealt with by way of a Special Loan of £12,500, again supplemented by the balance of the Government Grant. Details were advertised in accordance with the prescribed procedure, and as no objection was made the scheme subsequently received Executive sanction. The works included were distributed equally between the three Wards of the Municipality, and comprised the construction of tarred metal roads, concrete kerbs and gutters, concrete footpath paving, and in the East Ward, tree-planting in streets.

Conditions imposed by the Government are mainly designed to ensure the full-time engagement at award rates of persons registered for employment at the State Labour Exchange.

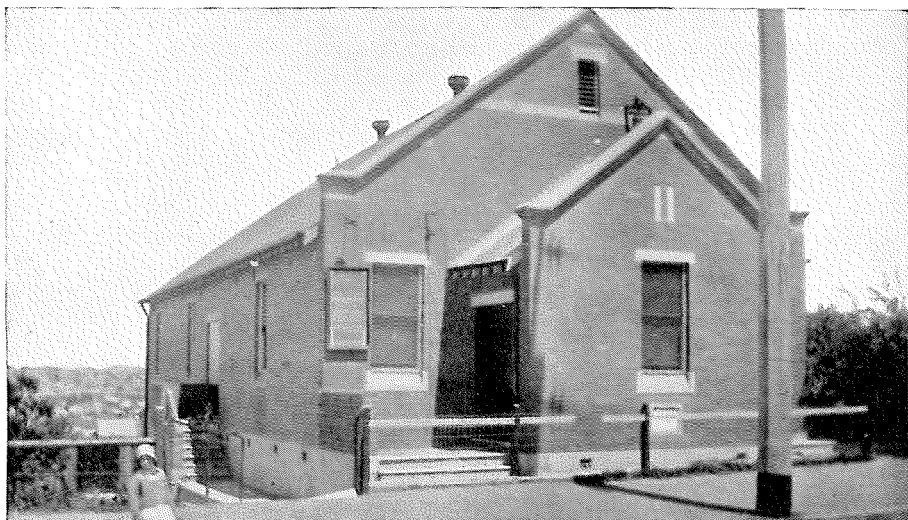
Some time was necessarily occupied in the finalisation of details in connection with the Scheme, and compliance with statutory requirements, and a commencement was made on the actual works early in 1937.

In connection with the Cook's River Improvement Scheme carried out by the Department of Public Works, the bridge over Cook's River at Water Street, which had been washed away towards the end of the previous year, was replaced by a concrete structure over the actual channel, connected by earthwork approaches on either side. The bridge over the same stream at Burwood Road, on the boundary between Enfield and Canterbury, has also been renewed, and a new bridge has been provided to connect Lees Avenue with the thoroughfare on the Campsie side of the river. In connection with the latter work the Council undertook to extend Lees Avenue to the new bridge, and the necessary land is in course of acquisition as the result of a satisfactory arrangement. The necessary road is being constructed as an item of the loan-cum-grant scheme mentioned above.

The construction of the Cooks River Channel in cement concrete by the Works Department was further extended, and the completion of this work will do much for the improvement of those parts of the municipality.



ENFIELD METHODIST CHURCH



### CROYDON PARK PRESBYTERIAN CHURCH

A prominent feature of the Council's policy during recent years has resulted in the development of Henley Park to its present pitch of perfection, and the provision of other areas to be improved as opportunity arises. In pursuance of this policy the Council continued the gradual improvement of Ford Park at Water and James Streets, which had been acquired by purchases made in 1933 and 1935. The opportunity presented by the subsidised loan scheme before-mentioned was seized upon to complete the further development of this area and also of Grant Park, adjoining Henley Park, and when the work now being carried out is completed, these will form valuable additions to the park areas of the municipality. Detailed reference has already been made to the development of the unique area in The Boulevard and Punchbowl Road.

The Council, mindful of the needs of the East Ward of the Municipality, has been desirous of acquiring a park area in that locality. The highly developed nature of that part of the suburb has made it almost impossible to secure any considerable area at a cost within the bounds of practical considerations, but it was finally decided to purchase a block situated between Seymour Street and Beresford Avenue, and adjacent to Croydon Park Public School. The matter had been practically finalised at the close of the year, and now only awaits Executive sanction.

The Garbage Removal Service was again carried out by contract. Arrangements were made for an additional collection each week in the East Ward, and this facility has been greatly appreciated by the residents concerned.

Further extensions of the sewers of the Metropolitan Water Sewerage and Drainage Board were made, with the result that only a comparatively small area of the Municipality now awaits attention. It is regrettable



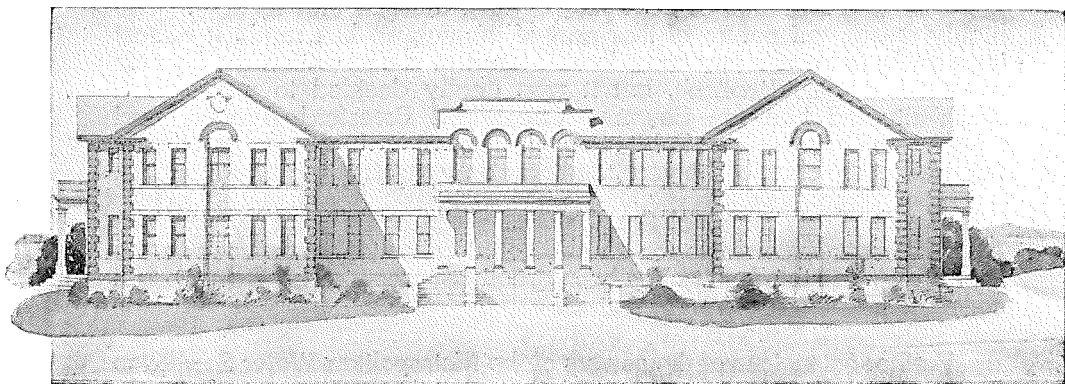
that in a number of cases property-owners have failed to take advantage of the service provided, but this has doubtless been due in some cases to economic conditions beyond the control of the individual, and the Council has in consequence been somewhat lenient in enforcing the connection of premises where good reason for clemency can be shown.

At the commencement of 1936 the Sydney County Council, which had come into being during the previous year, took over from the Sydney City Council the supply and distribution of electricity in the Municipality. Alderman S. A. Lloyd, M.L.A., a member of this Council, and one of the representatives of this constituency in the County Council, was elected as its first Chairman, and continued to hold office during 1936. The lighting of streets was continued under the system previously in force, with such additions as were considered necessary to meet public convenience. Improved arrangements for the lighting of boundary roads were also made by agreement with the Councils of the Municipalities of Ashfield and Canterbury. At the close of the period the total number of lamps in commission was 449. The cost of the service for the year was £1,089.

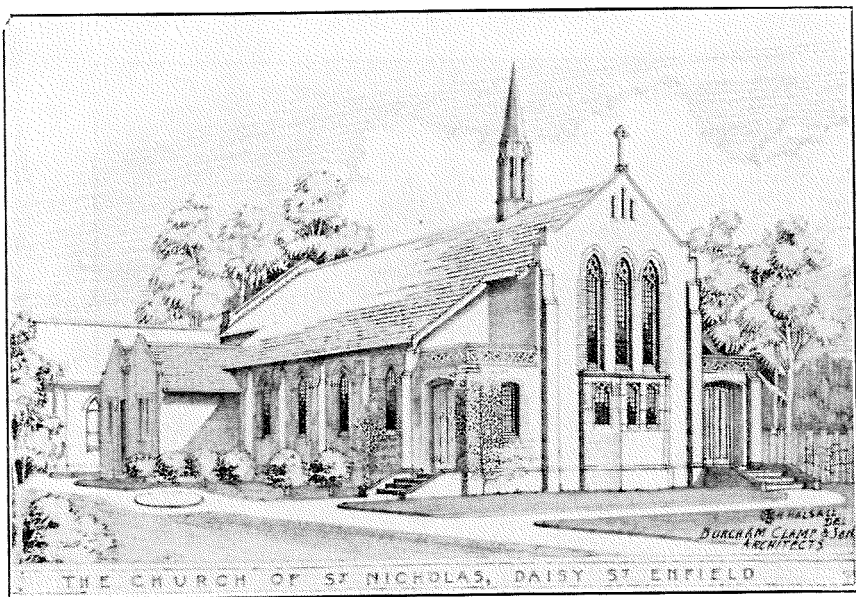
For many years this Council, with others, has been agitating for provision for the payment locally of electricity supply accounts. During the year the Sydney County Council entered into an arrangement as a result of which its officers attend at Enfield Council Chambers, on stated dates each quarter for the receipt of payments. The innovation was commenced at the beginning of 1937, and its popularity, as evinced by the extent to which it has been at once availed of, is sufficient indication of its value as a convenience to local residents.

The similar provision made by the Metropolitan Water Sewerage and Drainage Board for many years past for the local collection of accounts was continued during the period under review.

Applications for Building Permits numbered 138, and of these 136, representing buildings to the value of £66,633, were approved. Additions to the Western Suburbs Hospital to the value of £33,700 were commenced during the year. The remainder of the buildings erected mostly con-



LEIGH COLLEGE, ENFIELD



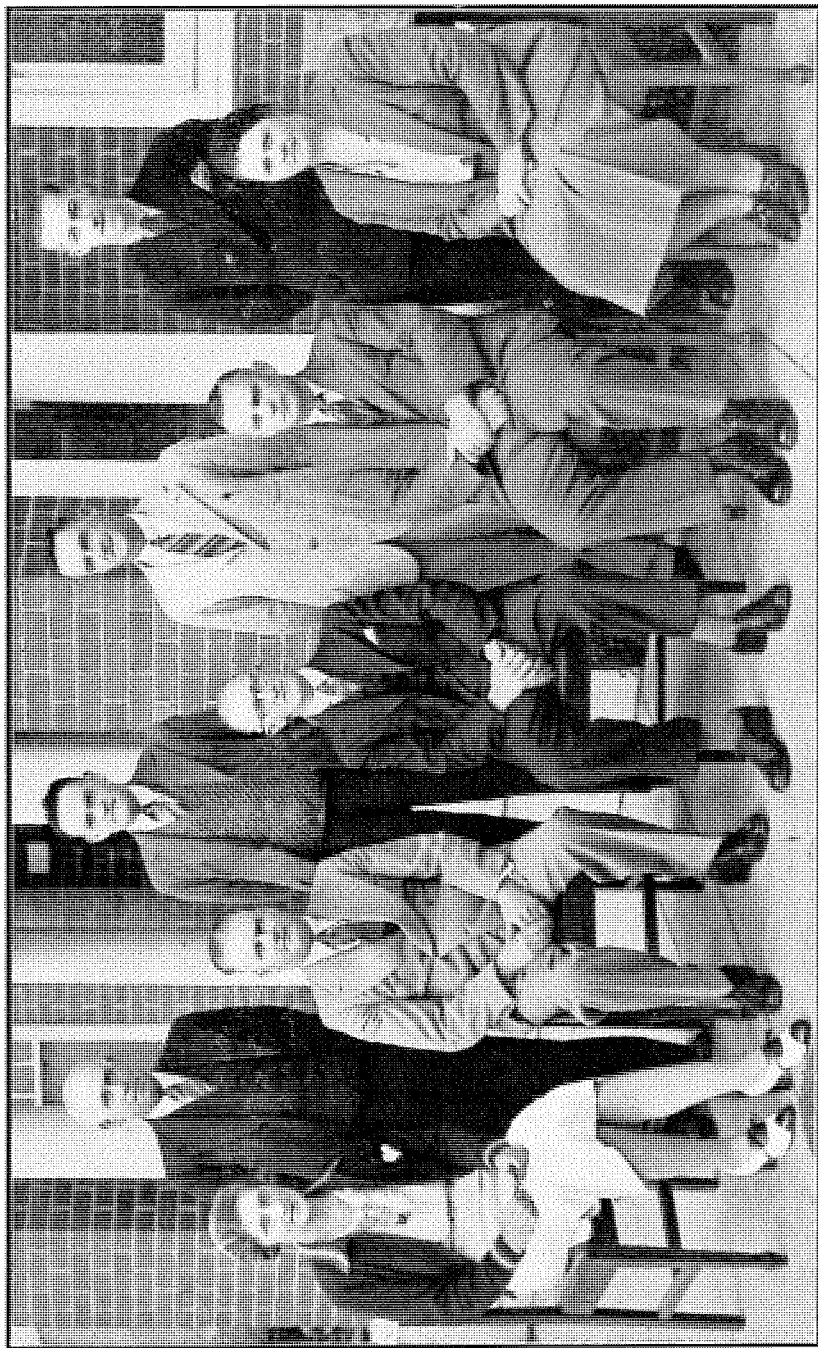
sisted of dwellings of the attractive and convenient type, which has become characteristic of the Municipality.

In all, only 45 cases of notifiable infectious disease occurred in the Municipality. This represents a rate of only three per thousand of the population, and this low incidence reflects the careful administration of the Council as Local Authority, and is a direct result of its policy of removing all conditions likely to prejudice the healthiness of the district.

The Enfield Olympic Swimming Pool retained its popularity, the total attendance for the year being 130,008, comprising 41,480 adults, 54,236 children, and 34,292 school children in organised classes. The total revenue amounted to £2,254, and working expenses and upkeep cost £1,631. In addition, provision to the extent of £1,052 was made for depreciation. The Annual Local Government Swimming Carnival organised by the Council was held on 11th March, 1936, and again received widespread support. The G. B. Phillips Cup, presented by the Council for competition among teams of Aldermen and Councillors, was won by the team representing North Sydney Council.

During 1936 the Council continued to subsidise the Western Suburbs Hospital, which is situated in this Municipality. As the hospital lands are exempt from municipal rating, the direct assistance thus given is supplemented indirectly in respect of the provision of community services. The Council also continued to subsidise the Western Suburbs District Ambulance Service.

In pursuance of the policy of reducing traffic risks wherever possible, several small resumptions were made for the purpose of improving visibility at busy street intersections.



# EXECUTIVE STAFF, MUNICIPALITY OF ENFIELD

Back Row (from left): E. Dudeney (Works Overseer); T. Lawson (Engineer's Cost Clerk); W. P. Upcroft (Asst. Health Inspector and Baths Manager); A. E. Lloyd (Clerk).  
 Front Row: Miss A. Brown (Typist); J. T. S. Ryan (Engineer); Harold A. Drew (Town Clerk); F. E. S. Moore (Health and Building Inspector); Miss G. Doe (Senior Clerk).

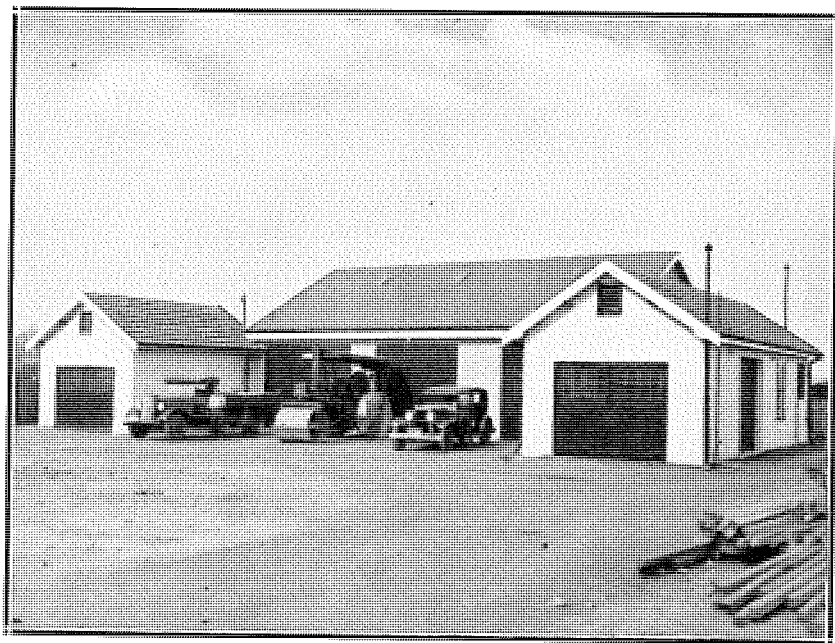
During the year 30 meetings of the Council were held, the attendances of the Aldermen being as follows :—

Alderman R. H. Jenner (Mayor)	30
Alderman T. E. Cooke - - -	29
Alderman W. E. Flockhart - -	30
Alderman A. Head - - - -	3 (Resigned 4-2-36)
Alderman D. H. Jackson - - -	30
Alderman J. H. Jones - - -	20 (Elected 22-2-36)
Alderman S. A. Lloyd, M.L.A. -	21
Alderman J. Mooney - - -	25
Alderman J. W. Parkes - - -	27
Alderman C. T. Quigg - - -	24 (Elected 22-2-36)

The death of Alderman Edward Grant, which occurred on 29th January, 1936, is recorded with profound regret. Alderman Grant was first elected to the Council on 28th January, 1911, and ever had the best interests of the Municipality at heart. He spared no effort in the discharge of his civic duties, and his passing leaves the Municipality poorer by the loss of his ripe experience and enthusiastic service.

The personnel of the Council was further changed by the resignation, on 4th February, 1936, of Alderman Albert Head. An election was held on 22nd February, 1936, to fill the two vacancies thus existing, and resulted in the election of Aldermen Charles T. Quigg and James H. Jones.

My thanks are due to my sister, Mrs. J. H. Olding, for her valuable assistance as Mayoress during my term of office, both with regard to



DEPOT AND PLANT, MITCHELL ST., ENFIELD

the social side of my duties, and in the many charitable activities which she has sponsored.

This brief resume of the Council's operations for 1936 would be incomplete without an expression of appreciation of the support and assistance given the Mayor from time to time by Alderman T. E. Cooke, Deputy Mayor, and by the other members of the Council.

The thanks of the Council are also due to Sir Charles W. C. Marr, M.P., and Mr. J. Gander, M.P., the Federal Members for the District; and to the Premier, the Hon. B. S. Stevens, M.L.A., and Messrs. H. Gordon Jackett, M.L.A., and J. McGirr, M.L.A., State Members; and Hon. E. S. Spooner, M.L.A., Minister for Works and Local Government, for their unfailing courtesy and attention in the many matters submitted to them in their respective spheres.

Grateful acknowledgment is also made of the assistance given by Alderman A. N. Campbell, Alderman S. A. Lloyd, M.L.A., and J. H. Gardiner, and Alderman T. D. Mutch, who respectively represent the Council on the Metropolitan Water Sewerage and Drainage Board, the Sydney County Council, and the Board of Fire Commissioners; by the staffs of the Departments of Works and Local Government and Public Health, and the Local Government Association; and of the loyal support accorded by each member of the Council's staff.

FOR THE COUNCIL OF THE MUNICIPALITY OF ENFIELD.

R. H. JENNER, Mayor.