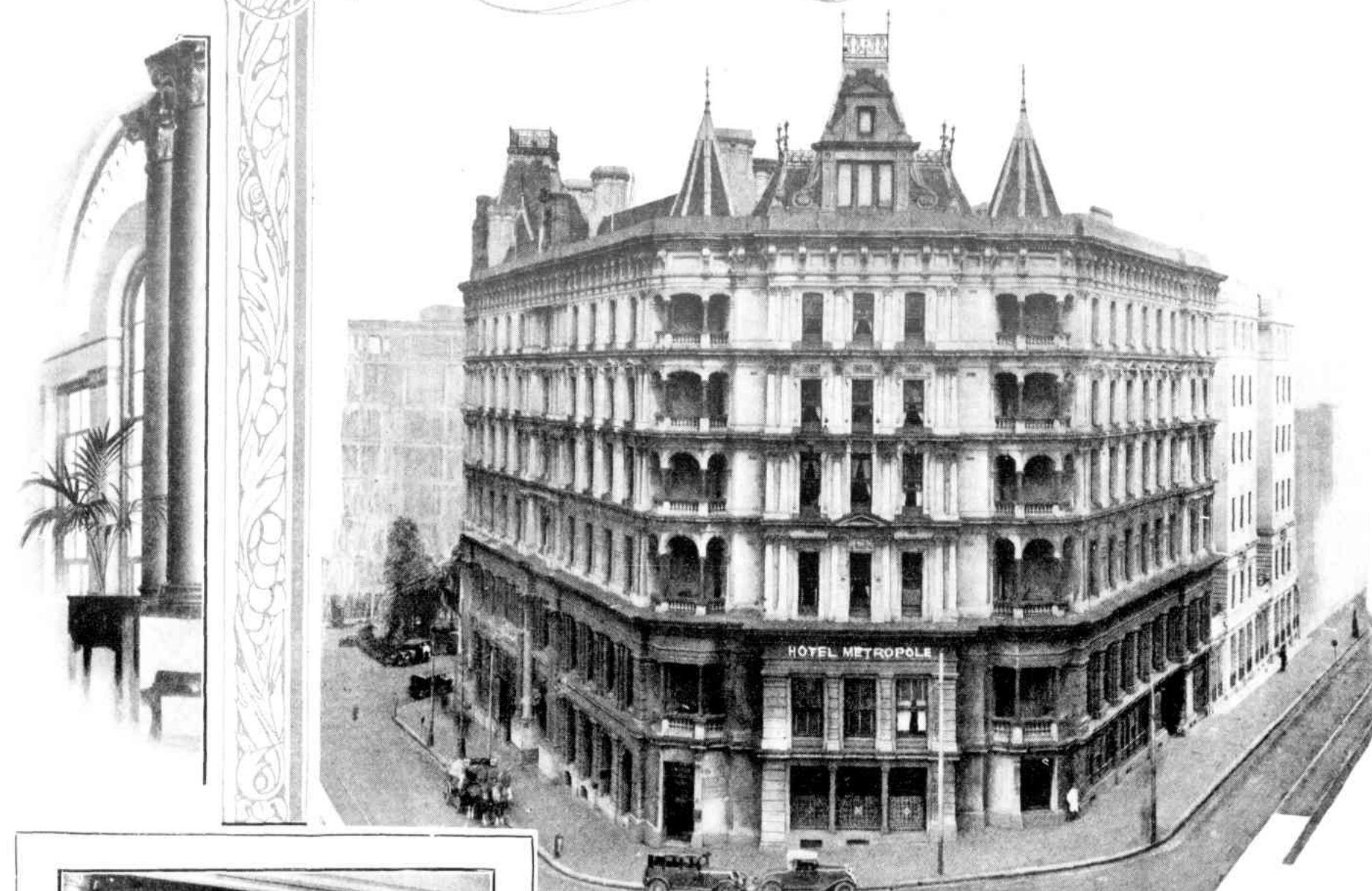
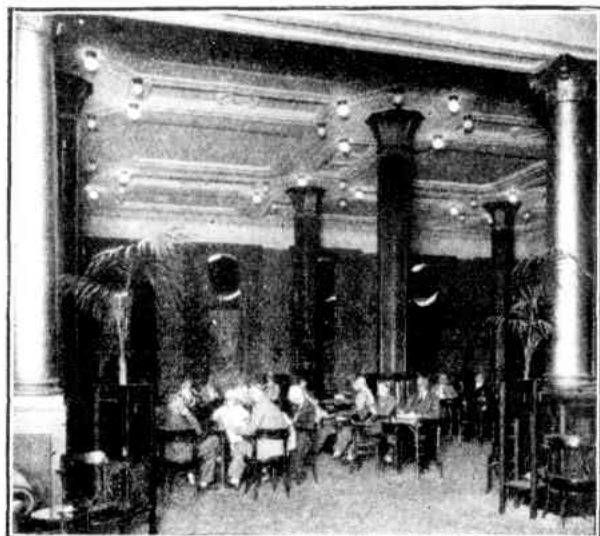


# Hotel Metropole

LARGEST & MOST MODERN HOTEL IN AUSTRALIA



THE HOTEL FACES THREE MAIN THOROUGHFARES.



THERE ARE BEAUTIFUL, SPACIOUS LOUNGE-ROOMS.

Sumptuous additions and interior reconstruction of the Hotel Metropole, which has a delightfully cool and refreshing position, facing three main thoroughfares in the heart of the city, have just been completed at a cost of nearly £250,000. The Hotel, which will now accommodate over 530 guests, is replete with most modern bedrooms, spacious lounges, beautiful drawing-rooms, and dignified dining-rooms. — Charges are very moderate.

Smoking Lounges and old features still retained.

Bed rooms overlook Gardens and Harbour, and have hot and cold water and telephone. Also rooms with private bathroom attached.

WINTER GARDEN FOR GUESTS.

Cable and Telegraphic address: "Metropole," Sydney.

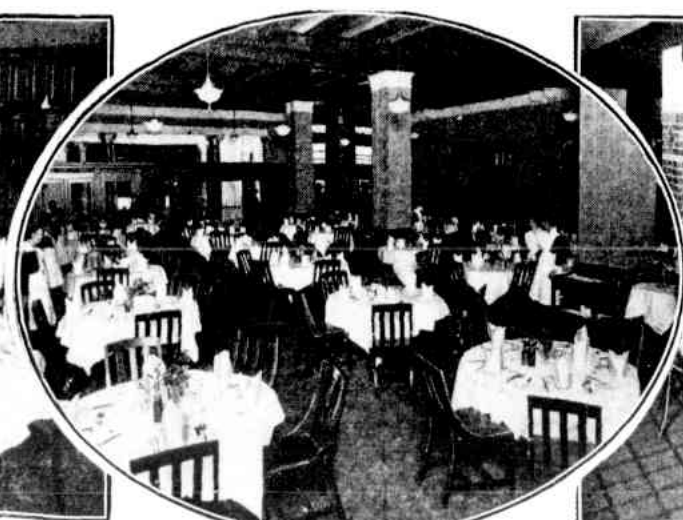


TABLE D'HOTE, A LA CARTE DINING-HALLS, AND GRILL-ROOM.  
(29)